

Joint Research Centre

The European Commission's in-house science service

www.jrc.ec.europa.eu

*Serving society
Stimulating innovation
Supporting legislation*



DISCLAIMER: This presentation and its contents do not constitute an official position of the European Commission or any of its services. Neither the European Commission nor any person acting on behalf of the Commission is responsible for the use which might be made of this presentation or its contents.

Regulation (EC) No 689/2008: Export notifications procedure

PIC Uredba, radionica

Alexandre Zenié

Simone Garbin

Ángel del Río Martín



E D E X I M

European Database
on Export and Import
of Dangerous Chemicals

Croatian Chamber of Economy

Hrvatska Gospodarska Komora, Zagreb: 22 Juli 2013

<http://edexim.jrc.ec.europa.eu>

JRC-IHCP-EDEXIM@ec.europa.eu

Introduction

- ❖ it aimed to identify uniquely a RIN in box 44 of the Single Administrative Document to clear customs
- ❖ it is used to export within Annex I to Regulation (EC) No 689/2008:
 - chemicals
 - preparations containing chemicals
 - articles containing chemicals
- ❖ it cannot be used to chemicals listed under Annex V
- ❖ it is used to inform the importing DNA about intended export

Principles



- ❑ the export notification procedure follows Article 7 'Export notifications forwarded to Parties and other countries' of the Regulation
- ❑ the exported preparation containing substances in a concentration triggering labelling obligation shall be notified: Directive 1999/45/EC
- ❑ it applies to all chemicals in Part 1 to Annex I to export to any country (Party to the RC or not) irrespectively of intended use
- ❑ it applies to export for the first time in importing country and for the first time in each subsequent year
- ❑ the export notification is valid from the date of expected export throughout the calendar year
- ❑ the activation of an export notification can be reduced according to the validity of explicit consent for Parts 2 & 3 chemicals

Procedure

- Exporter fills in the export notification form on EDEXIM;
- Exporter submits it to its DNA at least 30 days before the first export ever (or 15 days before, in each subsequent calendar year);
- DNA checks the export notification according to Annex II;
- The JRC validates the export notification. Furthermore, the JRC activates it at the same time, only when an import decision already exists for chemicals of Parts 2 & 3, otherwise, its status is "waiting for an explicit consent";
- EDEXIM forwards automatically the RIN status to both exporter & DNA

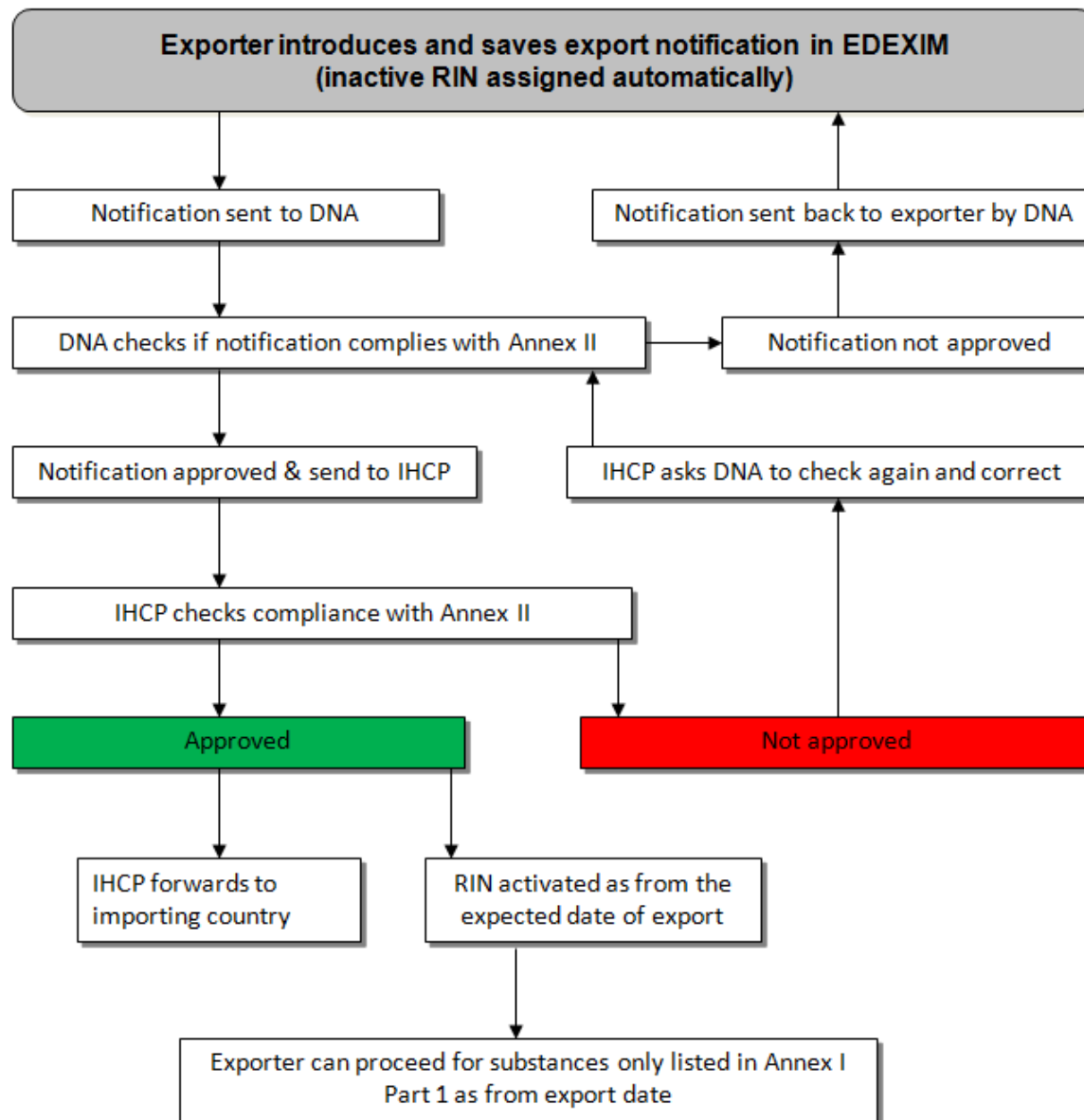
Procedure (Cont'd)

- JRC sends to the importing DNA:
 - the export notification form including the confirmation of receipt
 - the Safety Data Sheet (SDS) when available
 - an explanatory note concerning the EU export notification procedure and explicit consent provision

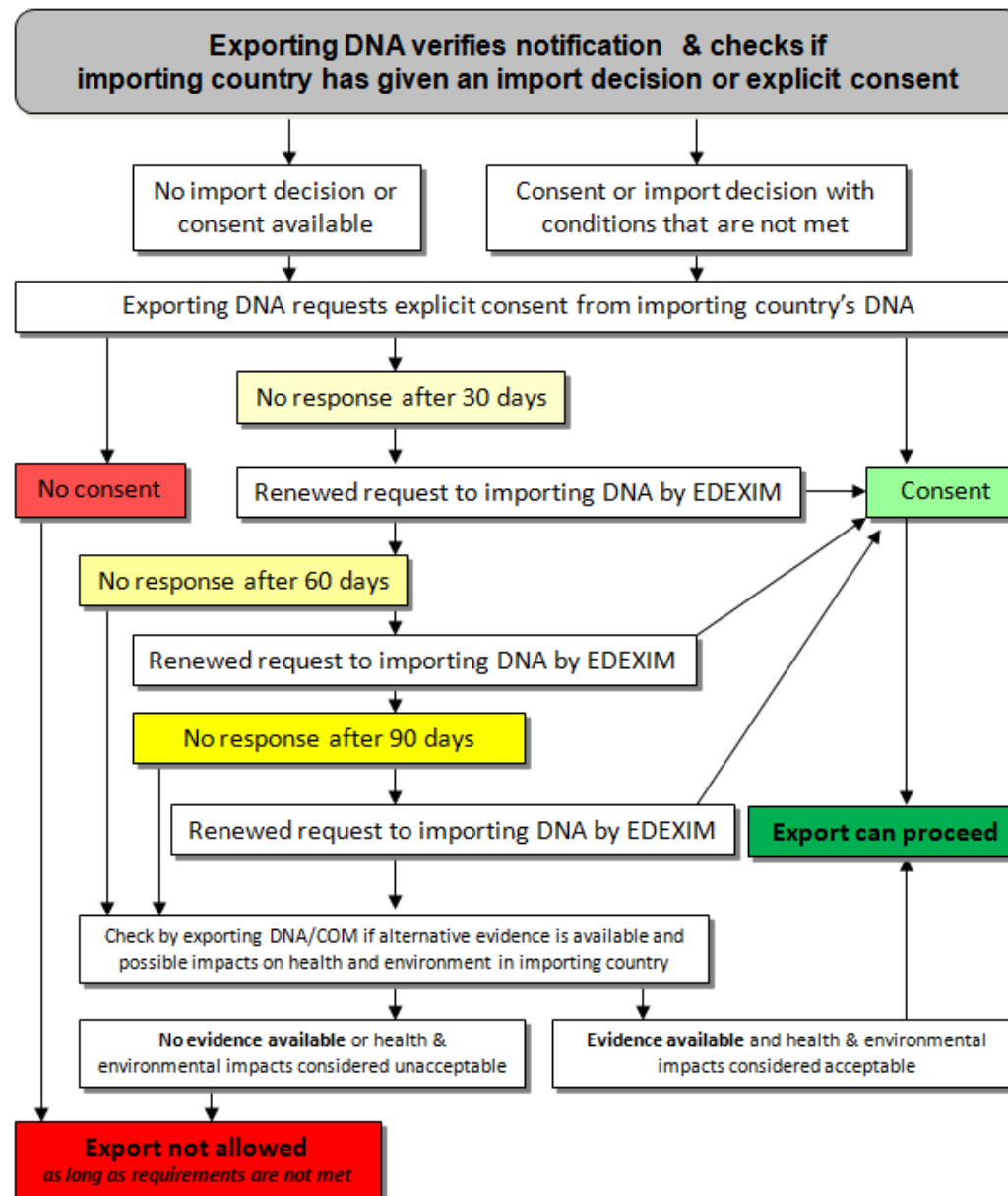
- JRC awaits the reception of the acknowledgment of receipt dully completed from the importing DNA;

- JRC re-sends the information to the importing country when necessary (only once)

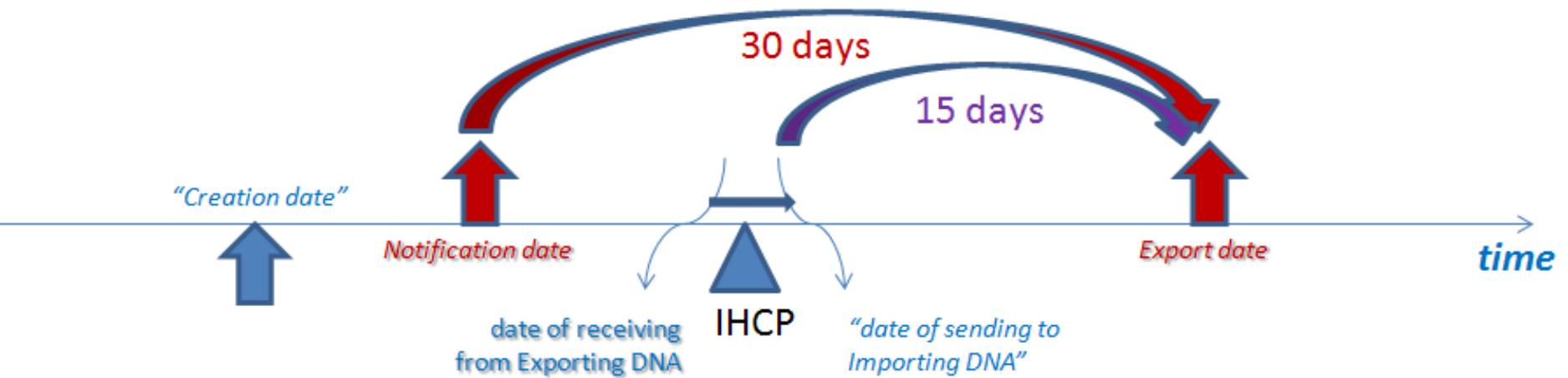
Workflow of the export notification procedure of Annex I Part 1 chemicals



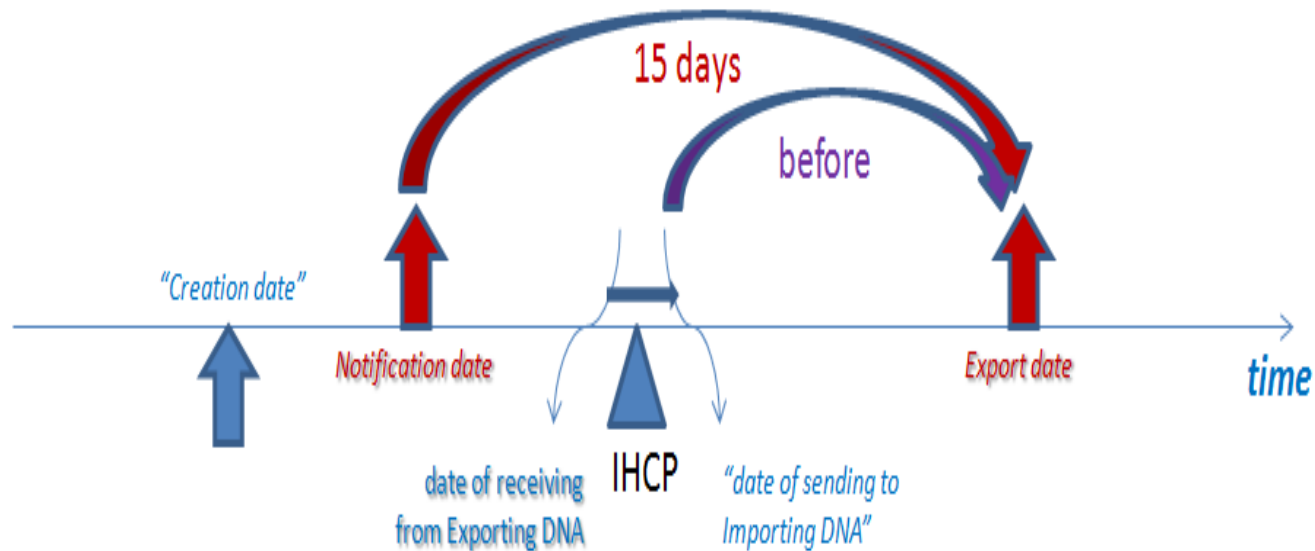
Workflow of the export notification procedure of Annex I Parts 2 & 3 chemicals



Timeline for the submission of export notifications for the first export ever



Timeline for the submission of export notifications in any subsequent calendar year



Specificities



- the heading of the export notification form is slightly different between importing Parties to the RC and the other countries;
- the activation of notifications for chemicals (or preparations containing chemicals) belonging **only** to Annex I Part 1 is simultaneous with the validation;
- the **foreseen category of use** in importing country can be either '**industrial chemical**' or '**pesticide**' (Section 3 of the export notification form: 'Information concerning the export');
- the subsequent exports of the same chemicals, from the same exporter to the same country, within the same calendar year **do not need** to be notified, unless required by importing countries;
- the subsequent export notification forms are not sent to the importing DNA, unless required by importing countries